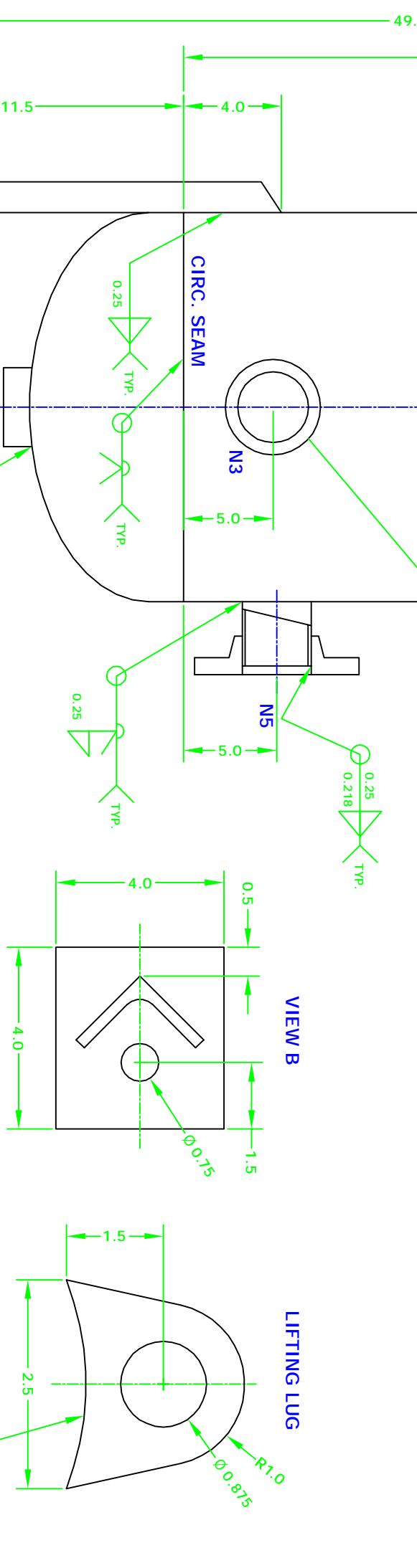
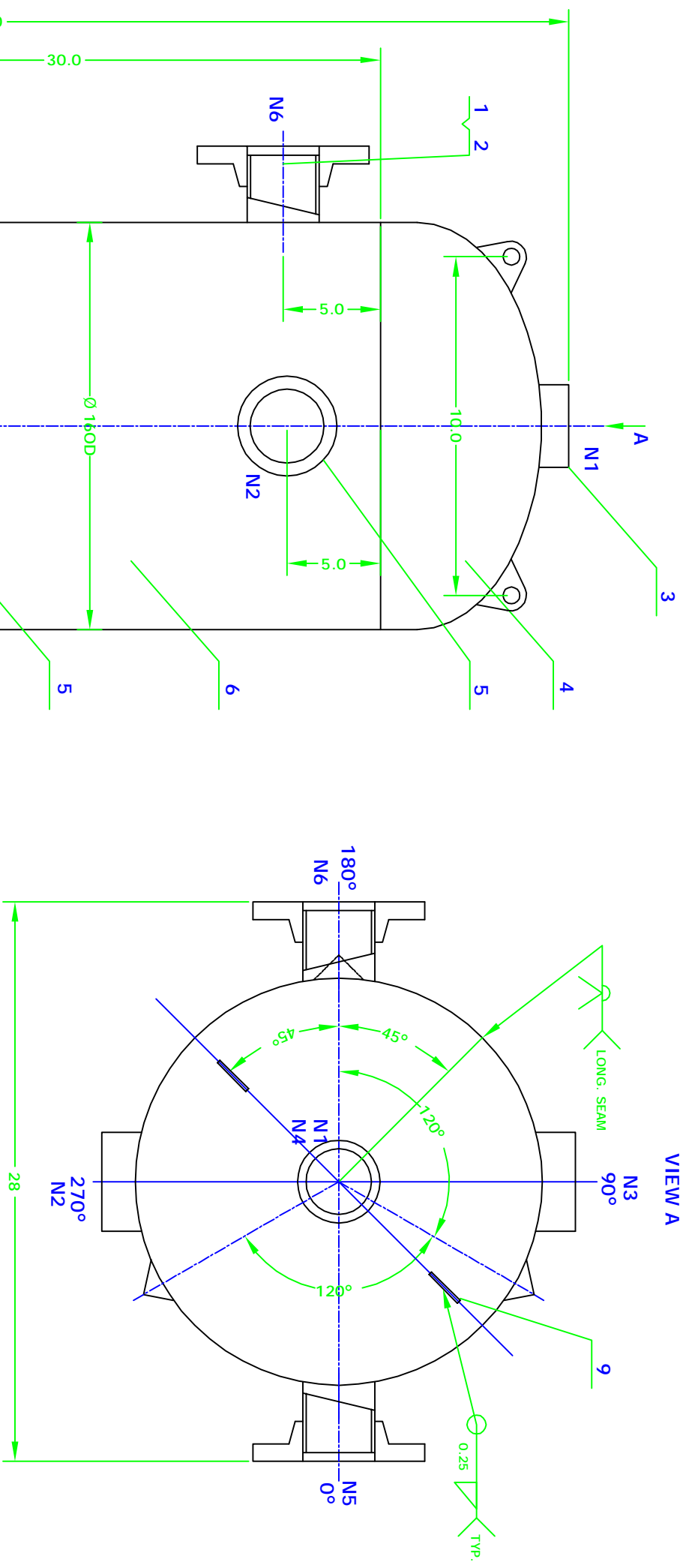


ITEM/ QTY.	DESCRIPTION	MAT'L	REMARKS	WT. (lbs)
1	2" SCH. 80 PIPE	SA-106 B		5.5
2	2" 150# RFSO FLANGE	SA-105		10
3	1.5" FNPT HALF COUPLING 3000#	SA-105		3
4	16" OD 2.1 SE HEAD, 0.25" T	SA-516 70	0.225" MIN. AF, 1.5" SF	57
5	2" FNPT HALF COUPLING 3000#	SA-105		3.5
6	SHELL-16" OD, 0.25" T, 30" LONG	SA-516 70		107
7	FOOTPLATE, 4X4X0.5"	SA-36		6.8
8	ANGLE, 2X2X0.25"	SA-36		12.4
9	LIFTING LUG, 0.75" THK	SA-36		2.3
				207.5



NAMEPLATE

NB#:

CERTIFIED BY
 ABC MACHINERY CO., LTD.
 100 PSI AT 300° F
 (MAXIMUM ALLOWABLE WORKING PRESSURE)
 -20° F AT 100 PSI
 (MINIMUM DESIGN METAL TEMPERATURE)
 SERIAL#:
 YEAR BUILT:

NOTES:

1. TANK DESIGN CONDITIONS
DESIGNED & CONSTRUCTED TO ASME SECTION VIII,
DIV. 1, 2007 ED.
DESIGN PRESSURE: 100PSIG
DESIGN TEMPERATURE: 300° F
MIN. DESIGN METAL TEMP.: -20° F
HYDROSTATIC TEST PRESSURE: 130PSIG
REQUIRED STAMP: U-STAMP
MILL TEST REPORTS: REQUIRED
2. ALL WELDS TO BE 1/4" FILET WELDS UNLESS
OTHERWISE NOTED.
3. LIFTING LUGS DESIGNED FOR LIFTING EMPTY VESSEL
ONLY.
4. ALL FLANGES TO HAVE BOLT HOLES STRADDLING
NATURAL CENTER LINES
5. VESSEL TO BE FREE FROM SPLATTER, DIRT AND OTHER
FOREIGN MATTER BEFORE SHIPMENT.
6. ALL WORKING SURFACES, EDGES, AND SHARP CORNERS
TO BE GROUND SMOOTH
7. X-RAY: SPOT ON BOTTOM CIRC. SEAM.
8. CORROSION ALLOWANCE: 0 INCH
9. IMPACT TEST NOT REQUIRED PER UG-20(f), UCS-66
10. NOZZLES FLUSH INSIDE.
11. SERVICE: WATER

NOZZLE & CLIP SCHEDULE

NOZ. QTY.	SERVICE	DESCRIPTION
N1 1	PSV	1 1/2" FNPT 3000# HALF COUPLING, B16.11
N2 1	DRAIN	2" FNPT 3000# HALF COUPLING, B16.11
N3 1	INSPECTION	2" FNPT 3000# HALF COUPLING, B16.11
N4 1	INSPECTION	1 1/2" FNPT 3000# HALF COUPLING, B16.11
N5 1	INLET	2" 150# RFSO FLANGE CONNECTION, B16.5
N6 1	OUTLET	2" 150# RFSO FLANGE CONNECTION, B16.5

Kedkep Consulting Inc.

AUDIT VESSEL

DATE	BY
08/11/08	CL

RELEASED FOR APPROVAL

REVISION	DATE	BY
0		

DIR: CL
SCALE: N/A

DATE: 08/11/08
FILE

CHECKED: _____
APPROVED: _____
DWGNO: _____
AUDIT 01 REV 0

NOTE: ALL INFORMATION CONTAINED ON THIS DRAWING IS THE PROPERTY OF KEDKEP CONSULTING INC. AND CAN NOT BE USED OR REPRODUCED WITHOUT PRIOR WRITTEN CONSENT OF KEDKEP CONSULTING INC.