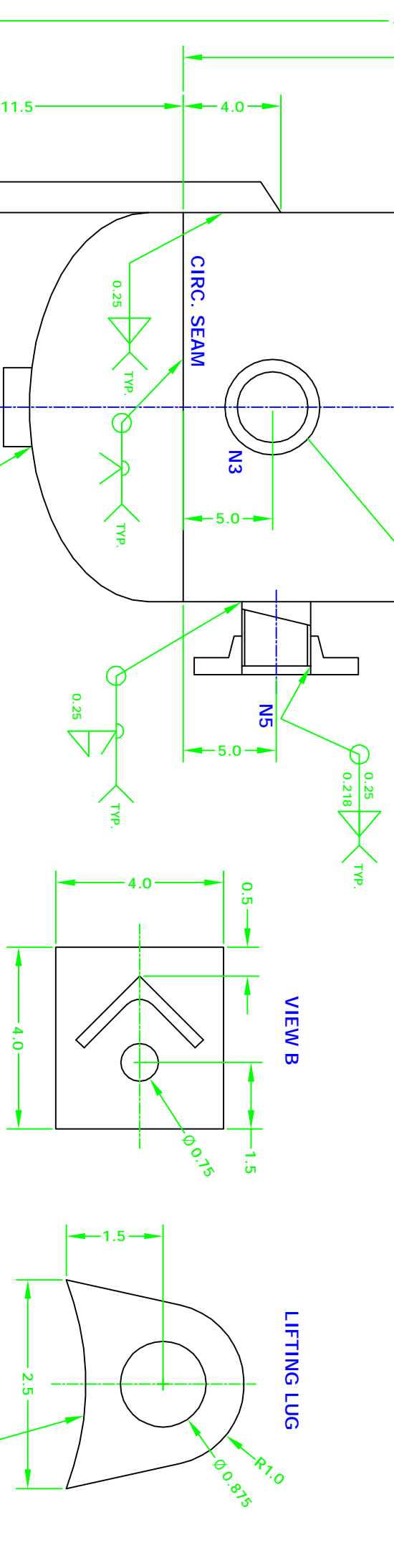
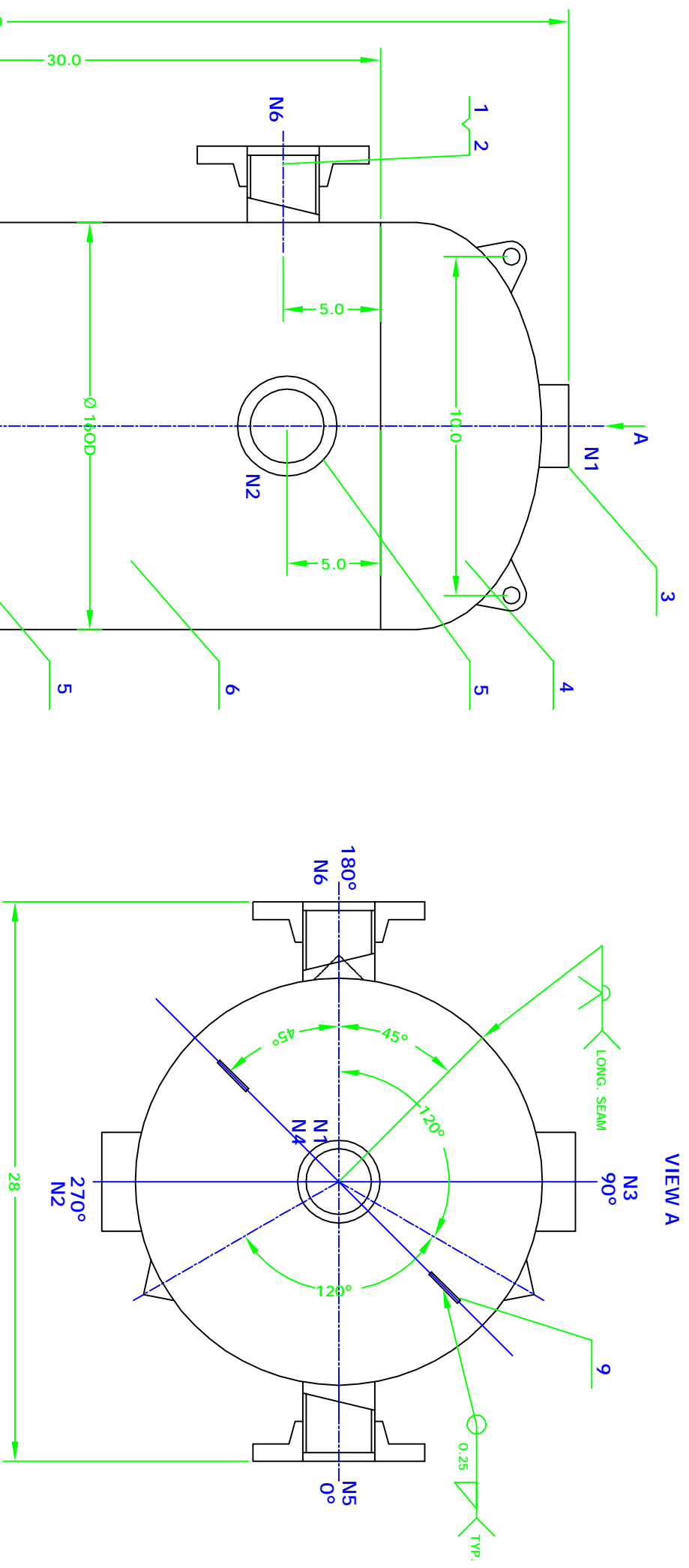


| ITEM/ QTY. | DESCRIPTION                     | MAT'L     | REMARKS                 | WT. (lbs) |
|------------|---------------------------------|-----------|-------------------------|-----------|
| 1          | 2" SCH. 80 PIPE                 | SA-106 B  |                         | 5.5       |
| 2          | 2" 150# RFSO FLANGE             | SA-105    |                         | 10        |
| 3          | 1.5" FNPT HALF COUPLING 3000#   | SA-105    |                         | 3         |
| 4          | 16" OD 2.1 SE HEAD, 0.25" T     | SA-516 70 | 0.225" MIN. AF, 1.5" SF | 57        |
| 5          | 2" FNPT HALF COUPLING 3000#     | SA-105    |                         | 3.5       |
| 6          | SHELL-16" OD, 0.25" T, 30" LONG | SA-516 70 |                         | 107       |
| 7          | FOOTPLATE, 4X4X0.5"             | SA-36     |                         | 6.8       |
| 8          | ANGLE, 2X2X0.25"                | SA-36     |                         | 12.4      |
| 9          | LIFTING LUG, 0.75" THK          | SA-36     |                         | 2.3       |
|            |                                 |           |                         | 207.5     |



| NOZ. QTY. | SERVICE    | DESCRIPTION                             |
|-----------|------------|---|
| N1        | PSV        | 1 1/2" FNPT 3000# HALF COUPLING, B16.11 |
| N2        | DRAIN      | 2" FNPT 3000# HALF COUPLING, B16.11     |
| N3        | INSPECTION | 2" FNPT 3000# HALF COUPLING, B16.11     |
| N4        | INSPECTION | 1 1/2" FNPT 3000# HALF COUPLING, B16.11 |
| N5        | INLET      | 2" 150# RFSO FLANGE CONNECTION, B16.5   |
| N6        | OUTLET     | 2" 150# RFSO FLANGE CONNECTION, B16.5   |

NAMEPLATE

NB#:

CERTIFIED BY  
ABC MACHINERY CO., LTD.

W RT-4 (MAXIMUM ALLOWABLE WORKING PRESSURE)  
100 PSI AT 300° F  
-20° F AT 100 PSI (MINIMUM DESIGN METAL TEMPERATURE)

SERIAL#:  
YEAR BUILT:

- NOTES:
- TANK DESIGN CONDITIONS DESIGNED & CONSTRUCTED TO ASME SECTION VIII, DIV. 1, 2007 ED. DESIGN PRESSURE: 100PSIG DESIGN TEMPERATURE: 300° F MIN. DESIGN METAL TEMP.: -20° F HYDROSTATIC TEST PRESSURE: 130PSIG REQUIRED STAMP: U-STAMP MILL TEST REPORTS: REQUIRED 2. ALL WELDS TO BE 1/4" FILET WELDS UNLESS OTHERWISE NOTED.
  - LIFTING LUGS DESIGNED FOR LIFTING EMPTY VESSEL ONLY.
  - ALL FLANGES TO HAVE BOLT HOLES STRADDLING NATURAL CENTER LINES
  - VESSEL TO BE FREE FROM SPLATTER, DIRT AND OTHER FOREIGN MATTER BEFORE SHIPMENT.
  - ALL WORKING SURFACES, EDGES, AND SHARP CORNERS TO BE GROUND SMOOTH
  - X-RAY: SPOT ON BOTTOM CIRC. SEAM.
  - CORROSION ALLOWANCE: 0 INCH
  - IMPACT TEST NOT REQUIRED PER UG-20(f), UCS-66
  - NOZZLES FLUSH INSIDE.
  - SERVICE: WATER

Kedkep Consulting Inc.

RELEASED FOR APPROVAL 08/11/08

REVISION

DATE BY

DIR. CL DATE 08/11/08

SCALE N/A FILE

AUDIT VESSEL

CHECKED APPROVED

DWGNO: AUDIT 01 REV 0